



FoodWise Nutrition Education

- Food-Safe Holiday Map.....page 2
- Pathfinder Academy.....page 2
- Pumpkin Chocolate Muffinspage 2

Families, Finances & Wellness

- Strong Couples Projectpage 3
- Healthy Living Classespage 3
- Mastery Makers Videospage 3
- Families & Screens Workshop.....page 3
- Resilient Co-Parenting Classespage 3

In this Issue:

4-H & Youth

- Pork Association Scholarship page 4
- Wildlife & Woods.....page 4
- Cultural Baking Workshoppage 4
- Celebrate the Artspage 4
- Club & Project Newspage 5
- Prom Dress Sale.....page 5
- 4H Food Stand Movie Night.....page 5

Agriculture Education

- Economics of Dairy Cattle..... page 6
- Hoof Health
- Badger Dairy Insight Webinars page 6
- Nutrient Management Training page 7
- On-Demand Modules..... page 7
- Pesticide Applicator Training page 7
- 2024 CAFO Update Meetings page 7

Back Page

- Virtual Strong Bodies Winter Session .. page 8

UW-Madison Division of Extension * Patrick Nehring, Regional Community Development Educator
920-391-4616 * patrick.nehring@wisc.edu

NONPROFIT NETWORKING OPPORTUNITIES

EXCHANGING IDEAS

Join us for upcoming Nonprofit Leader Conversations

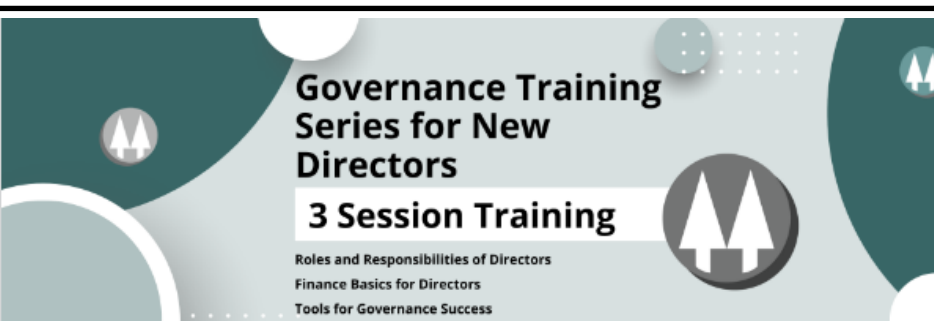
UW-Madison Extension and UW-Green Bay have partnered to offer resources to nonprofit organizations in the region. These resources can be found at www.uwgb.edu/nonprofit-network. One of these resources is the Nonprofit Leader Conversations, which are held on Zoom from 8:30-9:30 on the second and fourth Thursday of each month. These are conversations about a topic of interest. A guest is invited to share their knowledge and insights to get the conversation started. Then it is a conversation on the topic and an opportunity to ask questions and share experiences with other nonprofit leaders.

Upcoming Events and Educational Opportunities

January 11, 8:30-9:30, Marketing to Culture – Inclusive Communication

Join Dominique Green from Dom G Creative Agency for a conversation about how culture affects marketing and how to authentically market to various cultures residing within Wisconsin.

Register at: https://uwmadison.zoom.us/meeting/register/tJEkcOyvzqgEtTcUstlPMA_vMyoQLhyvBeu



Register Today for the 2024 Governance Training Series for New Directors!

About This Training Series:

Outstanding board leadership is a critical component of being a successful cooperative business. Great boards don't just happen, they are built and honed. Governance training is critical to developing a productive and forward-thinking board and ensuring a positive relationship between the board and management.

Directors have many duties and responsibilities. Every director has a unique combination of skills, expertise, and blind spots to the board room.

The stronger the individual directors are, the stronger the board will be as a whole.

This training is designed for new directors from all types and sectors of cooperatives.

Who should attend: Newly elected directors and directors who have not received formal cooperative board training.

Register today! <https://go.wisc.edu/newdirectors>

Pricing and scholarship information available at the link above.

Registration is open for the Excellence in Nonprofit Leadership Certificate: <https://www.uwgb.edu/certificate-programs/nonprofit-leadership/>

You can register for individual courses for \$169 each or for a \$95 discount register for all five courses and the capstone project. Upon completing all five courses and the capstone project, you can receive an exclusive UW-Green Bay credential, a digital badge validating your accomplishment and signaling to employers your mastery of the curriculum.

Courses for the Excellence in Nonprofit Leadership Certificate:

- Building a Strong Fund Development Program Live Online - Friday, January 26 with Shane Kohl
- Developing an Active Board of Directors Live Online - Friday, February 16 with Patrick Nehring and Melinda Pollen from UW-Madison Extension
- Foundations of Financial Management Live Online - Friday, March 8 with Steve Zimmerman
- Human Resource Management Live Online - Friday, March 29 with Tori England
- Marketing & Communication Strategy Live Online - Friday, April 19, 2024 with Bridget Krage O'Connor
- Capstone: Independent Project to be completed by Wednesday, May 3 with instructions from Lora Warner

Extension Connection Quarterly

Kewaunee County Extension Connection newspaper print version is going quarterly. Want to know more about what's happening with Extension every month? Sign up for our monthly e-newsletter.

Visit <https://kewaunee.extension.wisc.edu/extensionconnection/> and sign up today!

Receive the Extension Connection in your inbox!

Want to have the Extension Connection at your fingertips? Sign up today to receive the Extension Connection directly to your inbox! Be the first to know all the exciting events and opportunities available.

Visit <https://kewaunee.extension.wisc.edu/extensionconnection/> to sign up today!



EXTENSION CONNECTION ADDRESS CHANGES

Please let us know if your mailing address changes. Since the Extension Connection is mailed 3rd class, it is not forwarded, and UW-Extension must pay for incorrect addresses. Call 388-7141 for address changes or you will be removed from the list.

The Extension Connection

University of Wisconsin-Extension
A monthly publication for Kewaunee County residents. These programs are supported by your tax dollars. We look forward to receiving your comments. Please call us at the phone numbers provided in the individual headers.

UW-Madison Division of Extension * Laura Apfelbeck, FoodWise Coordinator
920-683-4170 * laura.apfelbeck@wisc.edu

YOUR MAP TO A FOOD-SAFE HOLIDAY

Follow some simple food safety advice to keep you and your guests feeling festive this winter.

PROPER PREPPING

Just as you have a procedure for storing your holiday gifts when you get home, you should have a system for storing your food.

- Make sure your fridge is set at or below **40 °F**. Chill perishable groceries within two hours of shopping.
- Store raw meats in a container or dish to prevent juices from leaking and set below ready-to-eat foods.
- Wash your hands for **20 SECONDS** with warm water and soap!
- Be sure to separate raw meat from ready-to-eat foods and dishes.

Don't forget: You need two thermometers. One for the fridge to ensure food is stored at 40 °F. One for food, particularly meat, to ensure it's cooked to the right temperature.

WELCOME TO Roastville

Always use a food thermometer to check that different holiday meats have been cooked to the right internal temperature.

- GROUND BEEF 160 °F
- DUCK 165 °F
- TURKEY 165 °F
- GOOSE 165 °F
- VEAL* 145 °F
- PORK* 145 °F
- LAMB* 145 °F
- STEAK* 145 °F

***Don't forget resting time!** Beef, veal, lamb, and pork should rest for **3 MINUTES** before carving or consuming.

HITTING THE ROAD

If you're bringing a dish to a get-together with coworkers, family or friends this holiday season, make sure you are transporting food safely.

KEEP COLD FOOD COLD 40 °F
When transporting cold dishes, place items in a cooler with ice or gel packs to keep food at or below 40 °F.

KEEP HOT FOOD HOT 140 °F
Keep hot foods at or above 140 °F by wrapping dishes in insulation bags or towels and newspaper.

DANGER ZONE DO NOT ENTER
Perishable food kept in the Danger Zone (between 40 - 140 °F) for longer than 2 hours should be thrown out.

EXCEPTIONS to Danger Zone include ready-to-eat items like cookies, crackers, bread, whole fruit.

USDA | Ad Council | For more food safety tips, go to FoodSafety.gov

FoodWise Partners with Pathfinder Academy in Algoma

Algoma's Pathfinder Academy aims to give students the skill set to help them achieve success after high school and to work with community members to gain lifelong connections. Last year FoodWise staff, Laura Apfelbeck and Jace Purdy, met with Algoma Pathfinder Academy teacher Alexis Gauger to discuss ways FoodWise might help students meet those goals.

In 2022, Jace piloted a 6-lesson series using Teen Cuisine, an evidence-based curriculum Teen that offers teens the knowledge and skills required to make informed food and lifestyle choices. Jace's role is to help students increase their confidence to apply these skills at home, which can lead to positive eating patterns and better health.

Student voice and choice is key at Pathfinder Academy. So in 2023, Alexis Gauger polled students to see if they wished to have Jace lead another series of Teen Cuisine. Fully 90% of students voted yes. The only dissenting votes came from students uninvolved last year and unfamiliar with the lessons. Students reviewed recipe options to select what they would like to make. Students' choices included breakfast burritos, oven baked chicken nuggets, and whole grain muffins.

Alexis said this series is important at Pathfinder because "Most of the Pathfinder students are going to be adults in the next year or so. Teen Cuisine teaches them the basics of nutrition so that they can start to realize what they are putting in their bodies. It also teaches them how to actually cook these nutritional recipes and shows them that not all healthy food is boring! All this is super important when it comes to these students starting to live on their own."

We used the recipe below for Pumpkin Chocolate Muffins and taught students about making half their grains whole grains by substituting a 50/50 mix of whole wheat flour and all purpose flour. The recipe originally calls for all purpose.



Pictured are Pathfinder students Deziray and Natalie holding pumpkin muffins made during the series.

Pumpkin Chocolate Muffins

This dense, moist chocolate muffin contains no fats or oils. The secret ingredient is canned (or puréed) pumpkin that binds the ingredients together for a tasty, satisfying treat.

Ingredients

- 2 cups all-purpose flour
- 3/4 cup sugar
- 1 teaspoon baking powder
- 1/2 teaspoon baking soda
- 1/2 cup cocoa powder
- 1 can pumpkin
- 1 cup water
- 1/2 cup chocolate chips

Directions

1. Wash hands with soap and water.
2. Whisk all the dry ingredients together. Add pumpkin and water.
3. Fold the wet ingredients into the dry ingredients until just combined. Fold in chocolate chips.
4. Place batter into 24 prepared muffin tins and bake at 350 °F for 10 to 12 minutes.



Nutrition Information

Serving Size: 1 muffin, 1/24 of recipe

[Show Full Display](#)

Nutrients	Amount
Total Calories	89
Total Fat	1 g
Saturated Fat	1 g
Cholesterol	0 mg
Sodium	76 mg
Carbohydrates	19 g
Dietary Fiber	2 g
Total Sugars	9 g
Added Sugars Included	8 g
Protein	2 g
Vitamin D	0 mcg
Calcium	21 mg
Iron	1 mg
Potassium	88 mg

N/A will display when nutrient data is unavailable

Please note: nutrient values are subject to change as data is updated

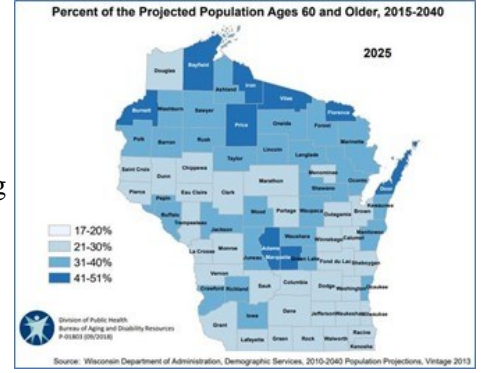


UW-Madison Division of Extension * Renee Koenig, Human Development and Relationships Educator
920-388-7137 * renee.koenig@wisc.edu



Healthy Living Classes

The Healthy Living Classes meet weekly in three different locations. The classes cover broad topics for holistic wellbeing. Examples of lessons include Financial Wellness, Planning Before Death, Getting Involved in the Community, Improving Your Relationships, Living Longer & Healthier, Nutrition, Exercise, Preventing Falls, Managing Medication, Better Sleep, Environmental/Nature Immersion, and Intergenerational Connections. These classes are important in our county as more than 30% of the population is projected to be over age 60 by 2025. Contact Renee Koenig at 920-388-7137 for details.



The Strong Couples Project

- ✓ **Participate in a 6-session online program scientifically shown to strengthen relationships**
- ✓ **Video calls with trained coach to help maximize program impact**
- ✓ **No cost to enroll and chance to win \$25 Amazon gift card for completing program surveys**

To learn more and enroll, please visit parenting.extension.wisc.edu and click 'Healthy Relationships'



Having a strong relationship with your romantic partner can be hard. And when you need help, finding trustworthy support can be equally difficult.

The Strong Couples Program includes:

- Six online sessions. Backed by research. Go at your own pace. Session topics include communication, commitment, problem-solving, and fun and friendship.
- Five video calls with a UW-Madison Extension educator.

This program is free!

The Strong Couples Project is led by the University of Illinois at Urbana Champaign and the University of Illinois Extension. The University of Wisconsin-Madison Extension is a participating partner.

Aging-Friendly Mastery Makers Videos

The Aging-Friendly Kewaunee County coalition has been meeting to address the needs of our older population. One of our key objectives is to reduce loneliness and its negative impact on health by promoting volunteer work and social activities. We created short videos that highlight the Mastery Makers who are over age 60 and making a positive influence in our county. View the videos here: <https://kewaunee.extension.wisc.edu/families-finances-wellness/mastery-makers/>



Families and Screens Workshop

The Families and Screens Workshop is one in a series of parenting classes offered. This class aims to decrease stress and arguments about screens and technology between family members. Participants learn how to identify their family values around screens and make a family media plan. The class is ideal for parents of 5-12 year olds.

Register now for Raising Wisconsin's Children! This free, virtual, day-long event is for dads, moms, grandparents, teachers, and other people caring for kids. Learn more and register here: <https://go.wisc.edu/rwc2024>



RESILIENT CO-PARENTING

A series of topic-specific classes for parents or caregivers raising children together while living apart.
Offered the 1st Thursday of each month via Zoom.

January 4th, 7:00-8:00 pm
Families Fighting Fair

The way you manage conflicts with your co-parent greatly impacts your children. Learn skills for positive conflict management, compromise, reframing and active listening.

Scan to register!

Extension UNIVERSITY OF WISCONSIN-MADISON
Human Development & Relationships Institute

Join us on January 4th for a FREE educational session aimed at helping you navigate the sometimes rough waters faced by families with children in more than one household!

Aging-Friendly Kewaunee County


We want to hear from you!

Please join us and help make Kewaunee County an Aging-Friendly place to live. Our group meets monthly. We discuss ideas and plan strategies to help our neighbors stay healthy and active in our county.

Contact Renee Koenig at 920-388-7137 or renee.koenig@wisc.edu for details.




**UW-Madison Division of Extension * Vacant
(920) 388-7141 for 4H Information**



2024 Youth Pig Project Scholarship The Wisconsin Pork Association Youth Committee is again offering Youth Pig Project scholarships. These scholarships are designed to assist 4-H and FFA members in establishing swine projects that can lead to development of life skills and career opportunities in the Wisconsin pork industry. 4-H and FFA youth are eligible to apply for a \$100 scholarship used to offset costs associated with their 2024 pig project. Our goal is to raise enough funds to award a minimum of 50 scholarships. Age divisions, as of January 1st, 2024, are as follows: Ages 9-12, 13-15, and 16-19. **NEW IN 2024:** Youth who are selected to receive a WPA Youth Pig Project Scholarship will be asked to participate in a 30 minute educational webinar to receive their \$100 scholarship check. Those who do not participate will not receive their scholarship. The Wisconsin Pork Association is committed to youth development and feels that offering resources like these will help further educate youth about swine production and other opportunities within the industry. Webinar dates will be announced later. Several Wisconsin show pig producers and supporters have generously helped to sponsor the Youth Pig Project Scholarships for 2024. If you are looking for a producer to purchase your show animals from, please consider reaching out to the sponsors and breeders listed on our website at www.wppa.org/youth/sales.

<https://wppa.org/youth/youth-pig-project/>

Applications are due no later than February 1st, 2024. For more information and to apply, visit the WPA website at <https://wppa.org/youth/internship-program/>.



VIRTUAL LEARNING OPPORTUNITY



Join us for virtual opportunities to learn about **Careers & Competitions in**

Open to youth in grades 6-12 and adult leaders. Come learn about what's available for our older youth in 4-H! Event registration is open in 4HOnline. You can attend as many hour long sessions as you like

Wildlife & Woods

Register via 4-H Online
wi.4honline.com

CAREERS & COMPETITION

VIRTUAL SERIES

- NOV. 27, 2023
- JAN. 22, 2024
- FEB. 26, 2024
- MAR. 25, 2024
- APRIL 22, 2024
- MAY 27, 2024



To learn more about virtual learning opportunities, please visit 4h.extension.wisc.edu/vlc

An EEO/AA employer, University of Wisconsin-Madison Division of Extension provides equal opportunities in employment and programming, including Title VI, Title IX, the Americans with Disabilities Act (ADA) and Section 504 of the Rehabilitation Act requirements.

Virtual Cultural Baking Registration Open to 4-H youth in 4th grade and above
Thursday, February 1 - 22, 7-8pm

Register here: https://uwmadison.co1.qualtrics.com/.../SV_4MdnATmCsXuaCeG

Join 4-H Educators from across northern Wisconsin for a baking journey. We'll try recipes from four different cultures. Each one will teach unique baking techniques. We will be make the following:

- Mexican Hot Chocolate Cookies
- Stick Toffee Pudding
- Rugelach
- Fortune Cookies

No registration cost. You buy your supplies. If you need help finding or getting items, reach out to your 4-H Educator. Assistance is available.

Zoom links and supply lists will be sent after registration closes on January 18. Sessions will be recorded and available for viewing if you cannot attend a session.




CELEBRATE THE ARTS

WISCONSIN 4-H FOUNDATION

CELEBRATE THE ARTS CONTEST

Submit Your Creations by January 15, 2024!

All current #WI4H members - Don't forget to submit your best artwork for the annual Celebrate the Arts Contest, sponsored by the #WI4HFoundation! Artists are strongly encouraged to create art that has a 4-H theme or has root in their 4-H experience. We can't wait to see your creations!

For contest rules and submission form, visit: <https://wis4hfoundation.org/celebrate-the-arts/>



**UW-Madison Division of Extension * Vacant
 (920) 388-7141 for 4H Information**



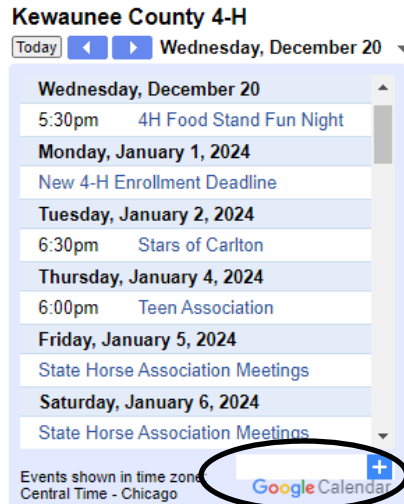
Club & Project News

2024 Kewaunee County 4-H Calendars

The calendars are on their way to you! Each family will receive one 4-H calendar via your club leader. If you are a Key Leader and not affiliated with a community club, please contact Darlene Boeder (920-676-4580) or the Extension office for your copy.

For up-to-date club and project meetings, please utilize the 4-H website Google calendar as that has the most current times and locations.

Add the 4-H calendar to your Google account! Click on the "Google Calendar" link and add it to your personal calendar.



Rabbit Project

The rabbit project had guest speakers at their December meeting. ARBA judge Michael Mageles, and Marley Heritier presented on breeding decisions and showmanship.



PROM DRESS SALE

Do you have a prom or homecoming dress that you would like to sell and keep all of the profit? Are you looking for a great prom or homecoming dress at a fantastic price? Then this is your sale!

Where: Kewaunee County Fairgrounds Exhibit Hall
625 3rd St., Luxemburg, WI 54217

Consignment Dates and Times: Bring in the dress/dresses you would like to sell.

Thursday, January 11th 3:00-8:00PM
 Friday, January 12th 12:00-4:00PM
 Saturday, January 13th 8:00-9:00AM

Cost: \$8.00 per dress to consign; consign 5 or more dresses and cost is \$6.00 per dress. Donations accepted.

Dress Shopping Dates and Times: Come find your dress! Cash and Checks (made out to seller) only.

Friday, January 12th 4:00-8:00PM
 Saturday, January 13th 8:00AM-3:00PM



ALL DRESSES THAT ARE NOT SOLD AND ANY FUNDS FROM THE DRESSES PURCHASED NEED TO BE PICKED UP BETWEEN 4:00 AND 5:00 PM ON SATURDAY, JANUARY 13TH.

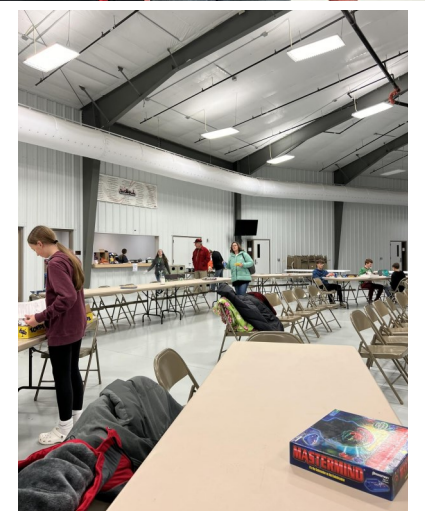
If you have questions, please contact Debbie Olson at 920-360-0702 or Kayla Bosman at 920-737-2031

All proceeds will go to Kewaunee County 4-H Teen Association

4H Food Stand Movie Night

Many thanks to Mike Nelson and the 4H Food Stand group for putting on a fun night of games, cookie decorating and the movie A Dog Named Christmas. Look for future 4H Food Stand Movie Nights in the coming months.

Photos courtesy of Katie Christoph.



Extension
 UNIVERSITY OF WISCONSIN-MADISON
 KEWAUNEE COUNTY



UW-Madison Division of Extension * Aerica Bjurstrom, Regional Dairy Educator
920-388-7138 * aerica.bjurstrom@wisc.edu

Economics of Dairy Cattle Hoof Health

When it comes to health issues on a dairy farm, lameness is usually a main concern along with mastitis and reproductive issues. Lameness includes any abnormality which causes a cow to change the way she walks. It can be caused by a range of foot and leg conditions including foot rot, digital dermatitis, laminitis, and claw disease.

Lameness can be influenced by nutrition, disease, genetic influences, management, and environmental factors. Not only does lameness cause pain and distress for dairy cattle, but it also has a large economic impact on the dairy operation. This fact sheet will mainly focus on the economic costs associated with hoof health but it should be noted it can be difficult to put a price on lameness due to several compounding factors. Lameness is commonly identified by locomotion scoring, but it can be difficult to detect until clinical signs are present. There are ranges in the literature stating that a case of lameness can cost \$90 – \$300 (US\$). Even with using \$90 per case, the cost to a 300 cow dairy with a 20 percent incidence rate, would be over \$5,400. Some people associate treatment as the leading cost of lameness, but there are several other areas that cost considerably more money. These include reduced milk yield, reduced fertility, increased labor, and increased risk of culling.

Reduced Milk Yield: A majority of research papers show that clinical lameness reduces milk yield. Lameness can reduce the amount of time at the feed bunk and therefore reduce dry matter intake, which is correlated with milk production. The amount of milk production lost can vary depending on whether the study compared lost milk production before or after lameness treatments, affected cows versus unaffected cows, or predicted milk yield. In a study from 2010, Archer et al., found that a severe case of lameness within the first month of lactation could reduce 305-day milk yield by 772 pounds. In a different study from 2008, Bicalho et al., estimated lameness could reduce 305-day milk anywhere from 692 – 935 pounds. The reduction in milk yield also depends on the type of lesion, with a sole ulcer causing the greatest reduction in milk (Table 1). At a milk price of \$15.60 per hundredweight (cwt.) that would amount to a \$198 reduction in milk yield from a single sole ulcer case. Another way to look at this is if a 300 cow herd had a 15 percent incidence rate that could amount to \$8,910 per year in milk loss.

Lesion	Reduction in yield (lbs)	Study/Reference
Digital dermatitis	0	Warnick et al., 2001
	0	Amory et al., 2008
	439 – 739	Gomez et al., 2015
General lameness (digital lameness other than white line disease)	794	Green et al., 2002
Sole ulcer	1,266	Amory et al., 2008
White line disease	814	Amory et al., 2008

*Adapted from Willshire et al., 2009

Reduced fertility: Lameness can have a negative effect on dairy cattle fertility. Any time a dairy cow is not cycling properly, not getting pregnant, or potentially losing a pregnancy results in a net loss for the farm. Increased days open can cause higher feed and reproductive costs to the operation. When top producing cows become lame and potentially culled from the herd, there is also the genetic impact from lost potential daughters. Even with genomic testing, it might be hard to put a price on this loss. As with milk production loss shown in Table 1, research shows the type of lesion can vary in the total amount of time from calving to the conception period by almost 30 days (Willshire et al., 2009).

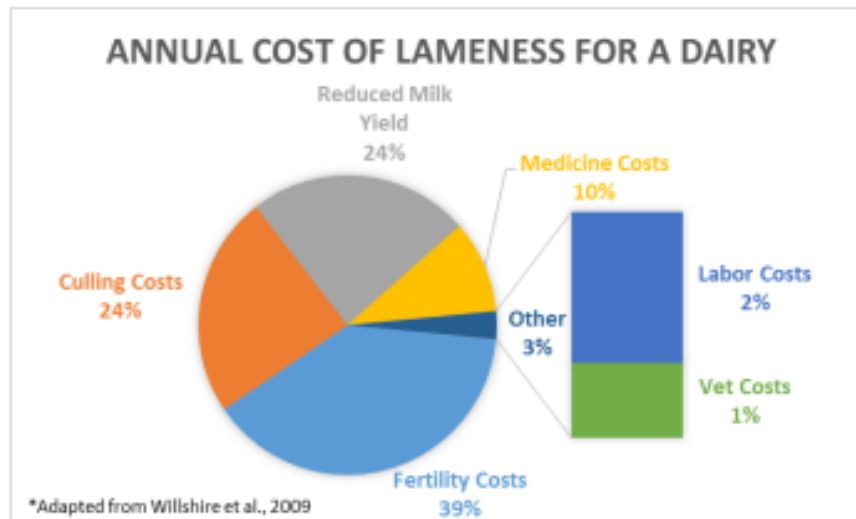
Treatment: Treatment costs may include hoof trimming, antibiotic treatment, bandages, blocks, and milk lost from treatment withdrawals. A majority of hoof trimmers will charge a set-up fee and a per cow, per wrap, and per block fee. Any time additional treatments are needed it adds to the total cost.

Labor: Labor costs vary depending upon whether a veterinarian, herdsman, hoof trimmer, or other worker performs the treatments for lameness. For example, a 2013 UW-Extension human resource survey found wages on WI dairy farms can range from \$8.25 – \$14.31 per hour depending on experience and the job category. If a veterinarian performed a majority of the treatments this hourly rate would be substantially higher.

Increased risk of culling: The decision to cull a cow is influenced by several factors, but lameness could be compounded with other factors. According to the literature review conducted by Willshire et al., a sole ulcer lesion has the highest (56 percent) increase in the risk of culling when compared to other lesion types.

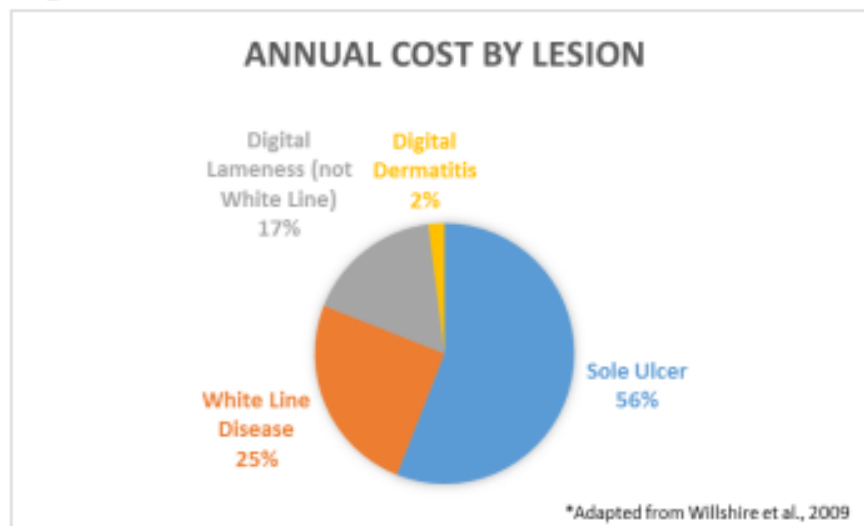
Total cost: The total cost of a lameness event can be determined by adding all the areas together. According to Willshire et al., fertility costs account for 39 percent of the total annual cost of lameness on a dairy herd. Figure 1.

Figure 1.



Milk yield and culling costs tied for second at 24 percent, followed by medicine cost at 10 percent. Other costs, which included labor and veterinary costs accounted for 3 percent of the total. Willshire et al., indicate that sole ulcers are the most expensive type of lesion associated with lameness on a dairy herd. Figure 2.

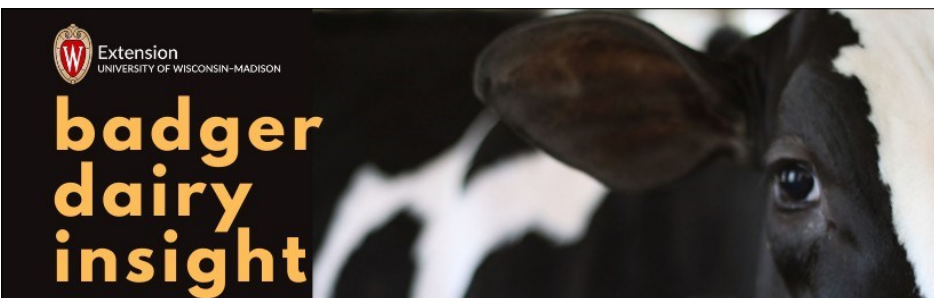
Figure 2.



Although recently, Gomez et al., 2015, compared cows that experienced digital dermatitis during the rearing period to healthy first lactation cows. Cows that experienced digital dermatitis had 439 – 739 pounds less milk production on a 305-day record and also worse health outcomes when compared to cows without digital dermatitis. Even though sole ulcers are one of the most difficult diseases to control on a dairy, any reduction in them can make a large economic difference on a farm. In another study, Cha et al., 2010, determined the average cost per lameness case (US\$) was \$216 for sole ulcers, \$133 for digital dermatitis, and \$121 for foot rot. If adjusted for inflation in 2016 that would be \$241, \$148, and \$135 respectively.

If a dairy operation can reduce lameness, especially sole ulcers, there can be a large economic impact to the farm. Some of the best ways to reduce lameness is to improve cow comfort, avoid overcrowding, provide proper ventilation, and develop a monitoring and treatment system. If proper records are kept, you can actually determine your own cost of lameness and then look for ways to make improvements!

Written by Eric Ronk and Aerica Bjurstrom



Join the University of Wisconsin-Madison – Division of Extension’s Dairy Program on the third Tuesday of each month from 11am-12 pm CST for the Badger Dairy Insight webinar series. New this year we are switching our webinars to a monthly platform. We are featuring your local Extension Dairy Program Educators and UW Specialists as they present on current dairy topics. Take the opportunity to learn from and discuss with experts on the dates below.

There is no charge to participate in the sessions, however pre-registration is required to allow access.

All webinars will be the third Tuesday of the month at 11:00 AM.

January 16, 2024

Selection of dairy cows for consistent performance under unpredictable conditions

February 20, 2024

Balancing diets for energy and amino acids to maximize milk components

March 19, 2024

Reproduction & genetics focus

For a full list of upcoming webinars and to register, visit <https://dairy.extension.wisc.edu/badger-dairy-insight/>



Winter 2024

UW-Madison Division of Extension * Aerica Bjurstrom, Regional Dairy Educator
920-388-7138 * aerica.bjurstrom@wisc.edu

2024 Virtual Nutrient Management Training for Farmers

The Nutrient and Pest Management Program (University of Wisconsin-Madison) & the Department of Agriculture, Trade and Consumer Protection (DATCP) are offering a virtual training for farmers interested in writing their own nutrient management plans. This training provides both the basics of nutrient management and an introduction to SnapPlus. The same training will be offered on 3 dates:

- January 3 (Wednesday)
- February 7 (Wednesday)
- March 6 (Wednesday)

Please register online at least three days in advance of the training date you plan to attend:
<https://go.wisc.edu/k0ewus>

Questions?

Dan Smith
dsmith@wisc.edu
608-219-5170



MORNING AGENDA	
10:00-10:15	Why nutrient management?
10:15-10:30	Soil sampling
10:30-10:45	Soil test interpretation
10:45-11:00	Soil pH and liming
11:00-11:15	15 minute break
11:15-11:55	Nitrogen management
11:55-12:40	Lunch break
AFTERNOON AGENDA	
12:40-1:10	Phosphorus management
1:10-1:25	Soil test P & water quality implications
1:25-1:40	Potassium management
1:40-2:00	Manure application precautions
2:30-2:45	Soil conservation
2:45-3:15	SnapPlus introduction

Upcoming Nutrient Management Training

Virtual-The Department of Agriculture, Trade and Consumer Protection and the Nutrient and Pest Management Program (University of Wisconsin-Madison) will offer virtual training for farmers interested in writing their own nutrient management plans. This training provides both the basics of nutrient management and an introduction to SnapPlus. The same training will be offered 10 a.m. to 3:15 p.m. on the following 3 dates:

- Wednesday, January 3, 2024
- Wednesday, February 7, 2024
- Wednesday, March 6, 2024

Registration is free. To register, visit <https://go.wisc.edu/k0ewus>.

In-Person County NMP Training—

January 30, 31, February 1—Kewaunee County

Contact Travis Engels at engels.travis@kewauneeco.org

February 13, 14, 15—Door County (NWTC)

March 12, 13, 14—Brown County

In Brown and Door Counties you can contact the training through Northeast Wisconsin Technical College (NWTC) <https://www.nwtc.edu/academics-and-training/courses/nutrient-management-47090497056927/47090497-2242-23568-01>

Welcome to the UW Nutrient Management Education self-paced program!

Need some help? [View the tutorial screen!](#) Want to keep track of your progress? [Download the checklist](#) WANT ONE PDF WITH ALL THE QUICK SUMMARIES? [Quick Summaries PDF](#)

Click on any module to get started!

NM1 Introduction to Nutrient Mgmt Planning	S6 Soil Sampling and Procedures	P1 Phosphorus Basics
NM2 Nutrient Management Planning Basics	S7 Soil Test Interpretation	P2 Phosphorus Management 1
NM3 The USDA-NRCS 590 NM Standard	S8 Altering Soil pH	P3 Phosphorus Management 2
S1 Soils Overview	S9 Soil Property Influences on Nutrient Recs	K1 Potassium Basics and Management
S2 Soil Fertility Basics	N1 Nitrogen Basics	M1 Manure for Crop Nutrition & Soil Health
S3 Nutrient Supply and Retention	N2 Base N Recommendations and Crediting	M2 Manure Analysis, Inventory & Applications
S4 Nutrient Uptake by Plants	N3 Adjusting Base N Recommendations Corn	SP1 SnapPlus Basics
S5 Soil pH	N4 Managing Nitrogen Applications	

WE WANT YOUR FEEDBACK! CLICK HERE TO TAKE A SURVEY

Funding and support for this project was provided by The Wisconsin Department of Agriculture, Trade & Consumer Protection and The Wisconsin Dairy Innovation Hub

NUTRIENT MANAGEMENT EDUCATION MODULES

Brush-up with On-Demand Nutrient Management Modules

Farmers, CCA's, agronomists working in nutrient management in Wisconsin are you looking to ramp up your skills? Access top notch resources in this self-paced program for busy professionals and it's FREE. Watch 1 module or watch them all. To start just click <https://uwnmfe.tiiny.site/>

Bountiful Pesticide Applicator Training Options

However, this includes a new online sign-up process. Two parts
1. Order your book
2. Sign up for the date/location you will attend. Scan the QR code in the graphic (upper right) to get started.

Brown, Door and Kewaunee Counties
Extension
UNIVERSITY OF WISCONSIN-MADISON

PESTICIDE APPLICATOR TRAINING

FACE-TO-FACE TRAINING AND EXAM
STEM BUILDING, UW-GREEN BAY CAMPUS
2019 Technology Way Room #113, Green Bay, WI 54311
January 18, 9:00 AM - NOON

ONLINE TRAINING AND EXAM
DOOR COUNTY GOVERNMENT CENTER
421 Nebraska St, Sturgeon Bay, WI 54235
March 28, 9:00 AM - NOON

Scan the QR code to register for Brown or Door County, and to purchase a manual, or visit <https://go.wisc.edu/bdkpat>.



SELF-STUDY (EXAM ONLY)
KEWAUNEE COUNTY FAIRGROUNDS
625 3rd St., Luxemburg, WI 54217 Call 920-388-7141 to schedule
All dates are 10:00 AM - Noon

January 8	February 12	March 11	April 8
January 22	February 26	March 25	

Manuals must be purchased online at patstore.wisc.edu/secure/items/private

An EEO/AA employer, University of Wisconsin-Madison Division of Extension provides equal opportunities in employment and programming, including Title IX and American with Disabilities (ADA) requirements. La Universidad de Wisconsin-Madison Division de Extensión, un empleador con igualdad de oportunidades y acción afirmativa (EEO/AA), proporciona igualdad de oportunidades en empleo y programas, incluyendo los requisitos del Título VI, Título IX, y de la Ley para Americanos con Discapacidades (ADA).

2024 CAFO update

Hosted by UW Madison Extension in collaboration with WI Department of Natural Resources

SAVE THE DATE FOR THE 2024 ANNUAL CAFO UPDATE!

Jointly sponsored by UW Madison Division of Extension's Conservation Professional Training Program and Wisconsin DNR, these workshops are designed for livestock operations with WPDES permits or farms near permit size (CAFOs) -- owners/management and key staff, their agronomic and engineering consultants, and agency staff and others who work with these operations

LOCATIONS AND DATES

- Monday, January 29th @ 10 am - Rice Lake
- Tuesday, January 30th @ 10 am - Curtiss
- Tuesday, February 6th @ 10 am - Green Bay
- Wednesday, February 7th @ 10 am - Fond du Lac
- Thursday, February 8th @ 7 am - Manitowoc
- Monday, February 12th @ 10 am - Jefferson
- Tuesday, February 13th @ 10 am - Darlington

REGISTER AT [HTTPS://GO.WISC.EDU/CAFO2024](https://go.wisc.edu/CAFO2024)

An EEO/AA employer, University of Wisconsin-Madison Division of Extension provides equal opportunities in employment and programming, including Title VI, Title IX, the Americans with Disabilities Act (ADA) and Section 504 of the Rehabilitation Act requirements. Contact Kevin Erb at 920-391-4652 (711 for Wisconsin Relay) for more information on this program or for accommodation requests.



Extension

UNIVERSITY OF WISCONSIN-MADISON

KEWAUNEE COUNTY EXTENSION CONNECTION

Connecting people with the University of Wisconsin

Winter
2024

STRONG *People*™

STRONG BODIES



Join us for the StrongBodies Program!

StrongBodies has been shown to increase strength, muscle mass, and bone density. Classes are held twice weekly and include progressive resistance training, balance training, and flexibility exercises.

Questions? Contact Jen Whitty at jennifer.whitty@wisc.edu

Virtual StrongBodies - Winter 2024 Session

Dates: January 9 through March 28

Time: Tuesdays and Thursdays, 9:00 – 10:15 am

How to Sign Up: Register online at <https://go.wisc.edu/9mw2v8>

A welcome email with the Zoom link to join class will be sent in the week prior to the series or within 3-5 days if registering after January 2nd



Extension
UNIVERSITY OF WISCONSIN-MADISON

An AA/EEO employer, University of Wisconsin-Extension provides equal opportunities in employment and programming, including Title VI, Title IX and ADA requirements.

Non-Profit Org.,
U.S. Postage
PAID
Berlin, WI
Permit No. 27

EXTENSION KEWAUNEE COUNTY
625 Third Street
Luxemburg WI 54217

An EEO/AA employer, University of Wisconsin-Madison Division of Extension provides equal opportunities in employment and programming, including Title VI, Title IX, the Americans with Disabilities Act (ADA) and Section 504 of the Rehabilitation Act requirements.

Como empleador que brinda igualdad de oportunidades en el empleo y acción afirmativa (EEO/AA, por sus siglas en inglés), la University of Wisconsin-Madison Division of Extension, proporciona igualdad de oportunidades en el empleo y en sus programas, incluyendo los requisitos del Título VI, Título IX, y de la ley federal para personas con discapacidades en los Estados Unidos (ADA, por sus siglas en inglés) y los requisitos de la Sección 504 del Rehabilitation Act.

Tus Tswv Hauj Lwm Ntawm (EEO/AA), ntawm lub Tsev Kawm Ntawv Qib Siab (University of Wisconsin-Madison Division of Extension) pab rau kev neaj ncees txog kev hauj lwjv thiab kev pab cuam, xws li nyob rau hauv Title VI, Title IX, thiab ntawm tsab cai Americans with Disabilities Act (ADA) yuav tsum kom muaj thiab Feem 504 ntawm the Txoj Cai Kev Pab Rov Tsim Kho Uas Tau Teev Tseg.